

Online Patient Portal

The online patient portal site is intuitive and convenient; it will take you less than 15 minutes to set-up.

Rest assured that all information submitted in this online registration form will be treated by Affleck, MD Eye Care as part of your confidential patient record.

To Go Directly to specific topic click on the topic below

STEP 1: SET-UP: Password & username

STEP 2: SET-UP: Login

STEP 3: SET-UP: User Validation

STEP 4: SET-UP: Reset Password

STEP 5: SET-UP: consent form

Step-by-step ***Online Registration instructions***

You are required to complete a onetime set-up process. In the set up you will be asked to authenticate yourself and customize your security questions. You will also be asked to consent to some policies.

Remember-- Your password does expire, so go to the link within the day you are enabled, login and complete the set-up.

It will take a few minutes. Once you have reset your password, you can return at a different time to enter the registration information if you would like.

If your temporary password becomes inactive, call us for a new-active password. It will take about 20 minutes after we re-set your password before you will be able to re-login.

SET-UP

STEP 1: SET-UP

- Open your e-mail with the subject line: "Portal login information from your doctor's office" from reminders@eclinicalmail.com.
- Double click on the password to see it. Remember it.
- Click on the Patient Portal URL link it will take you to the login screen.

Dear "Patient's first Name"

We have exciting news regarding your health care!

As we continue in our efforts to provide you, our patients, with the highest quality of care, we are constantly looking for methods of working together with you to ensure that you are not only aware of but also involved in the maintenance and improvement of your health.

To that end, we are proud to announce that our practice now offers you the opportunity to use the power of the web to track all aspects of your health care through our office. The Patient Portal enables our patients to communicate with our practice easily, safely, and securely over the Internet.

Patient Portal URL: <https://mycw6.eclinicalweb.com/afec/jsp/login.jsp>

Username: first name, last name, year of birth (with no spaces or commons)

Password:

If you have issues viewing the password: copy and paste the link
<https://mycw6.eclinicalweb.com/afec/jsp/accessCred.jsp?val1=%2FjESwMxxEDusvaFXhG3Nxg%3D%3D&val2=Y6RyVH%2BC5KM%3D> to your browser.

Through the Patient Portal, you will be able to

- ask questions of doctors, nurses, and staff members
- request prescription refills and referrals
- set up appointments
- examine your current and past statements

... all from the comfort of your home, whenever it is convenient for you!

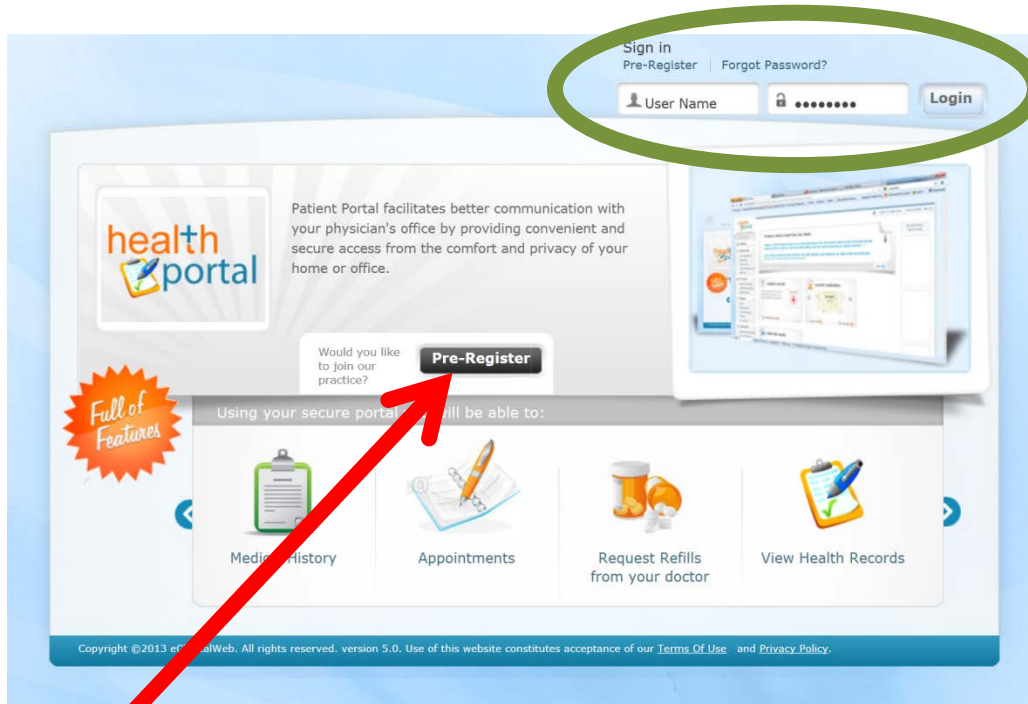
By using the Patient Portal you no longer have to call the office, leave a message, and wait for a response to get the results of your lab work; those results will be available to you on the Portal. You no longer have to call with a question or concern; you can send a message to the office through the Portal and expect a prompt reply.

Begin today to take an active role in managing your health care.

STEP 2: SET-UP

At the sign in screen

You can find the login in the upper right corner.



DO NOT use the Pre-register button

Type in your username and password in the boxes in the upper right corner.

Click Login

STEP 3: SET-UP

User Validation

Welcome Valued Patient,
As an added security measure, please answer any **one** of the questions below to authenticate yourself. By submitting this information you are confirming that you are the intended recipient of the access credentials and have not obtained the information in error.

Date Of Birth

OR

Phone Number Ext

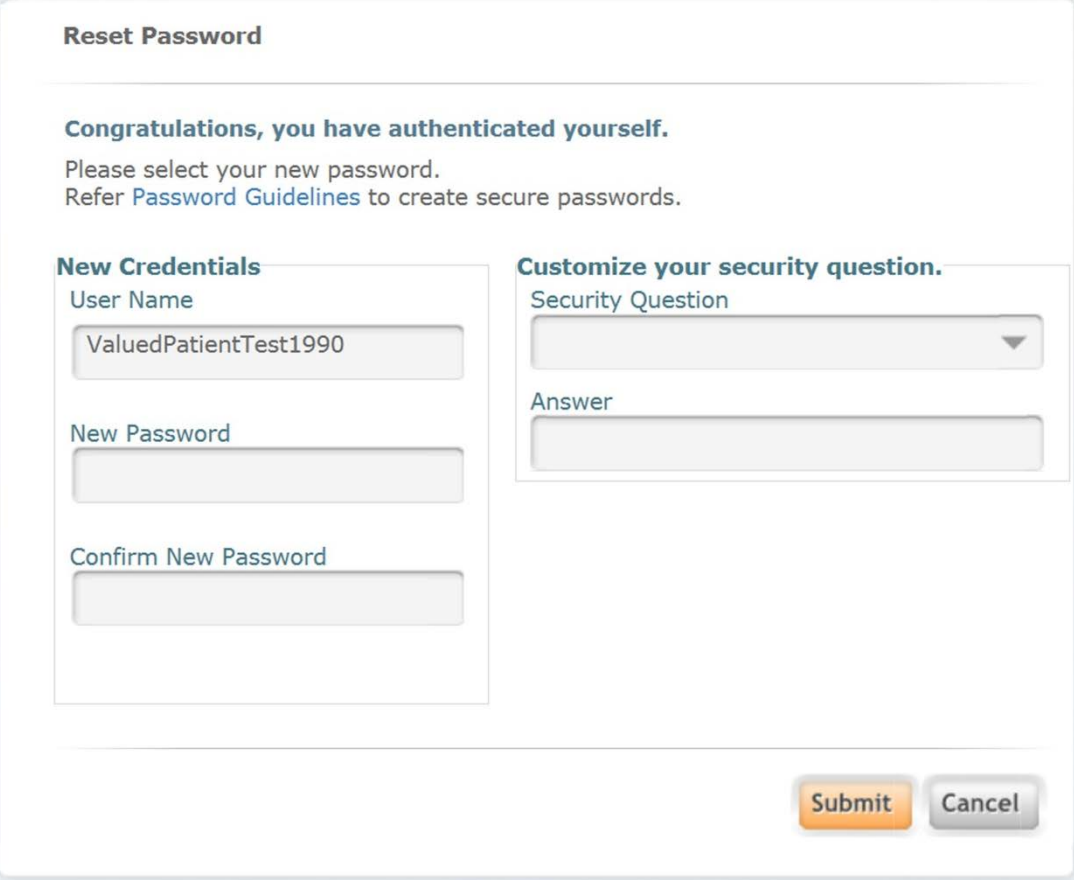
At the User Validation screen

Enter your birth date or home phone number on file at Affleck, MD Eye Care.

Click Submit

STEP 4: SET-UP

At the Reset Password screen



Enter your new password.

Enter your new password again in the confirm box.

Use the down arrow to see the list of security questions.

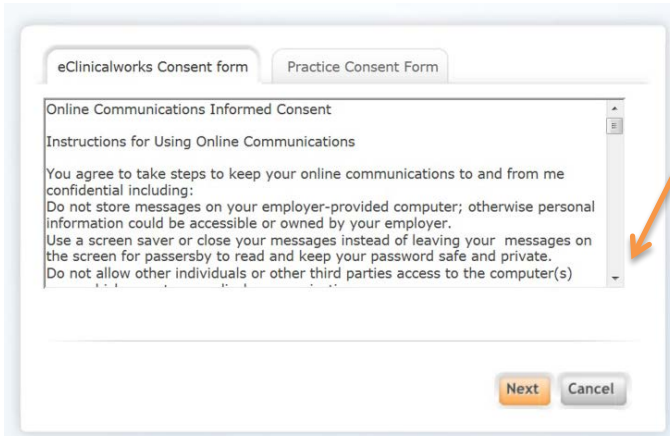
Select your security question.

Enter your answer to

the question.

Click Submit

STEP 5: SET-UP

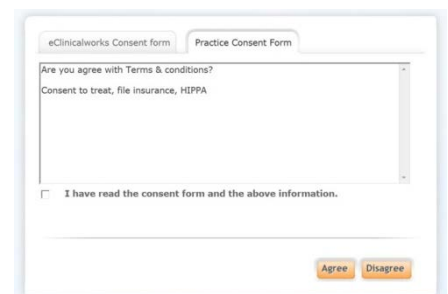


Please read the consent form

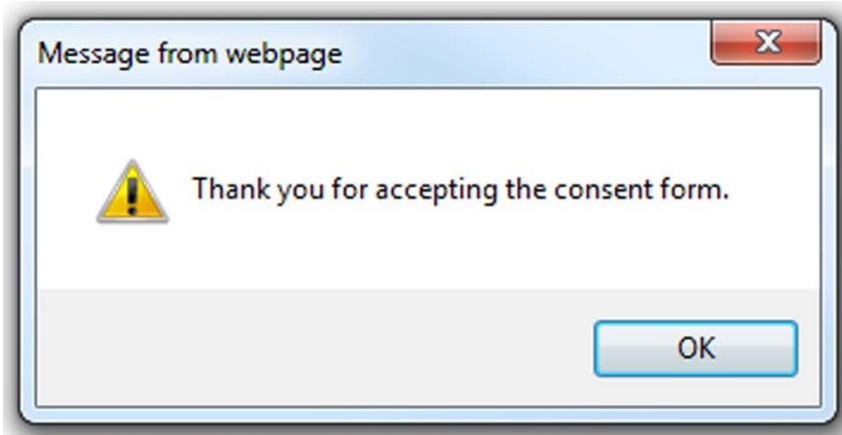
Click on the arrows to scroll the consent form down.

Click next

Read the second consent form



STEP 6: SET-UP



This message means your one time set up is complete. You may log out and return at another time to complete your online registration or you may continue.

YOUR LOGIN IS COMPLETE!

Thank you!