



Welcome to Your Hospital

Sunnyside
Medical Bldg.

Channing
Medical Bldg.

Main
Entrance

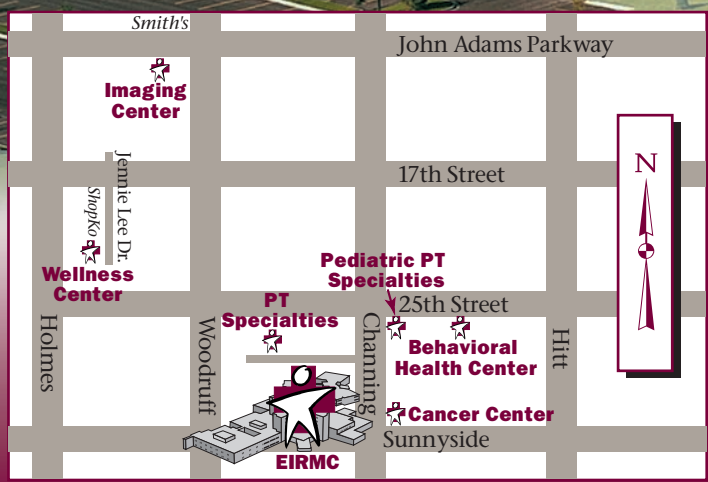
Emergency
Entrance

Visitor
Parking

Visitor
Parking

Visitor
Parking

Channing Way



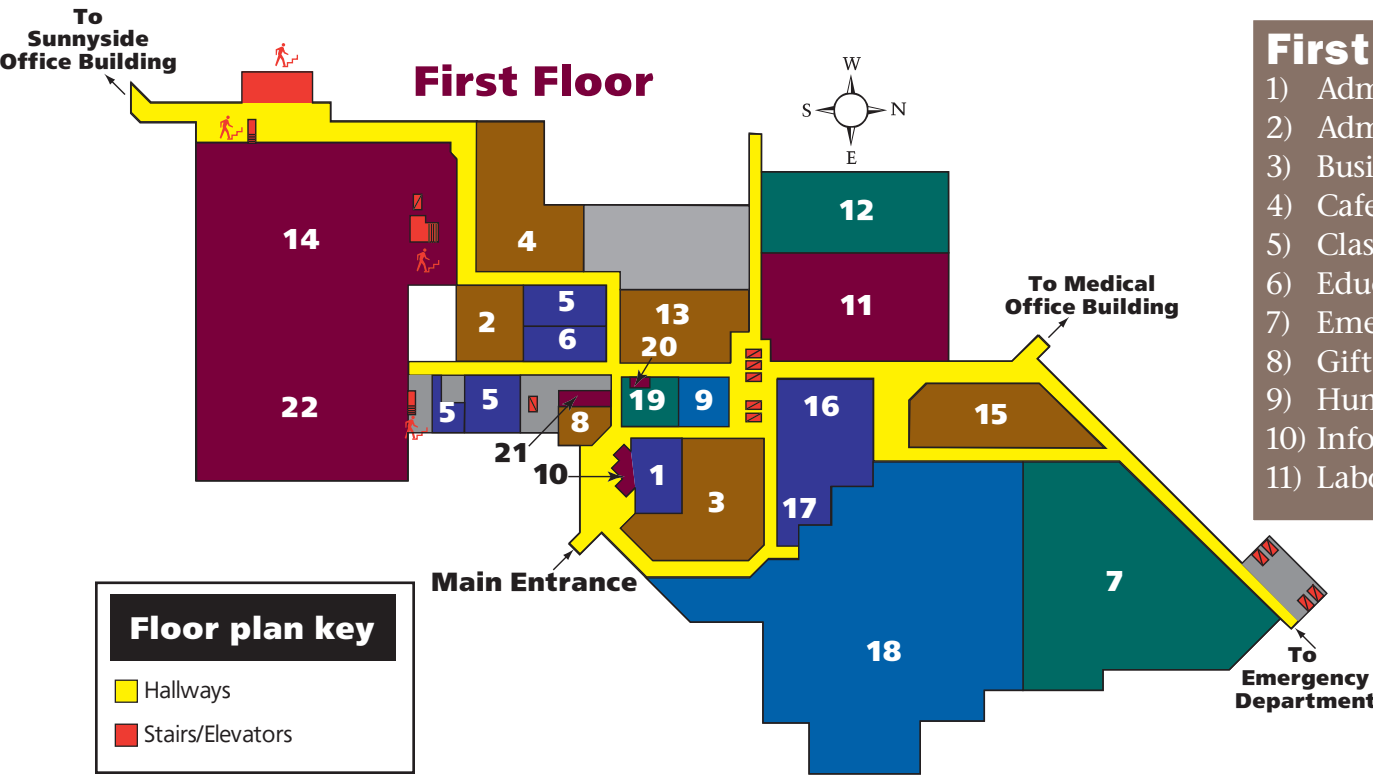
In addition to the main campus, EIRMC has 6 satellite locations (shown on map).

Behavioral Health Center
2280 East 25th St.
Cancer Center
3245 Channing Way

Imaging Center
1670 John Adams Parkway
Pediatric Therapy Specialties
2635 Channing Way

Therapy Specialties
2840 Channing Way
Wellness Center
1904 Jennie Lee Drive

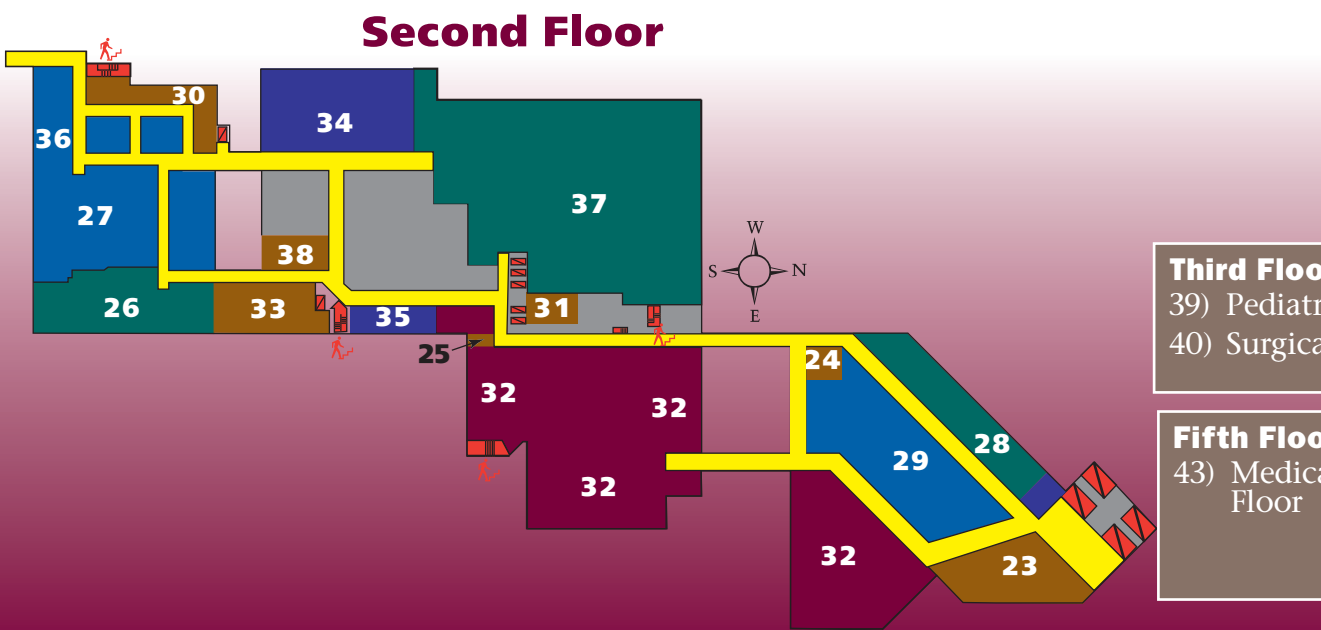
Floor-by-Floor Locator



Floor plan key

- Hallways
- Stairs/Elevators

- First Floor**
- 1) Admissions
 - 2) Administration
 - 3) Business Office
 - 4) Cafeteria
 - 5) Classrooms A-E
 - 6) Education
 - 7) Emergency Room
 - 8) Gift Shop
 - 9) Human Resources
 - 10) Information Desk
 - 11) Laboratory
 - 12) Materials Management
 - 13) Medical Records
 - 14) Nursery & NICU
 - 15) Pharmacy
 - 16) Physical Therapy
 - 17) Pool Wound Care
 - 18) Radiology (X-Ray)
 - 19) Risk Management
 - 20) Social Services
 - 21) Volunteer Services
 - 22) Women's Center



- Second Floor**
- 23) Cardio-Pulmonary Rehab
 - 24) Cath Holding
 - 25) Chapel
 - 26) Day Surgery Admissions
 - 27) Day Surgery
 - 28) Echo Cardiology
 - 29) EKG
 - 30) Endoscopy Lab
 - 31) ICU waiting Room
 - 32) Intensive Care Unit
 - 33) Pre-Admission
 - 34) Recovery Room
 - 35) Respiratory Services
 - 36) Sleep Lab
 - 37) Surgery
 - 38) Surgery Waiting Room

- Third Floor**
- 39) Pediatrics
 - 40) Surgical/ Orthopedics

- Fourth Floor**
- 41) Epilepsy Monitoring Unit
 - 42) Intermediate Medical Care

- Fifth Floor**
- 43) Medical/ Neurological Floor

- Sixth Floor**
- 44) Occupational Therapy
 - 45) Rehabilitation Unit
 - 46) Speech Therapy
 - 47) Transitional Care Unit